



“Picture the absolute BEST customer service experience you have ever had and then multiply that by 10.”

— Rebecca, Lantern Member

Lantern Infusion Therapy: What You Need to Know

Real help. Less stress. One call can change everything.

Your Health Plan, CEBT, has partnered with Lantern to make infusion therapy simple, affordable and convenient. Whether you receive treatment in your living room or at a trusted infusion center, you'll save time and money while having a dedicated care team by your side every step of the way.

What Does Your Lantern Benefit Include?

- Lower or no out-of-pocket costs for covered treatments*
- Highly qualified providers vetted for safety and quality
- Options for in-home care or local infusion centers
- A dedicated Clinical Care Specialist to guide you from start to finish

*Costs and coverage may vary. Call to confirm your coverage.

How Do I Access the Benefit?

If you or your doctor decides infusion therapy is right for you, call Lantern before you begin. We'll confirm your coverage, explore in-home options and help schedule your first appointment.

Call your Lantern Clinical Care Specialist at (855) 200-6675.

What Is Infusion Therapy?

A treatment that delivers fluids, medications or nutrients directly into your vein.

What Conditions May Require Infusion Therapy?

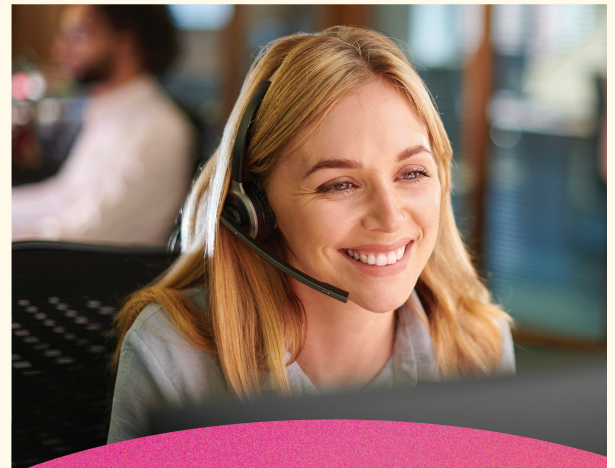
Conditions can include cancer, autoimmune diseases, inflammatory disorders, multiple sclerosis, immunodeficiency disorders, blood disorders, infections, gastrointestinal disorders, chronic pain, heart conditions and nutritional deficiencies.

Can I receive infusion therapy at home?

Many treatments can be delivered safely in your living room. Call Lantern to see if your medication qualifies.

What if I need an infusion center?

If home therapy isn't an option, we'll connect you to a trusted infusion center in our nationwide network.



One call can
change
everything.

(855) 200-6675



Scan to learn more
about this benefit.

P.S. If you'd like to confirm your coverage, the CEBT team will be glad to walk you through your Lantern benefits.

© 2025 Lantern Specialty Care. All rights reserved.

In the event of a medical emergency, call 911 or visit your nearest emergency room.